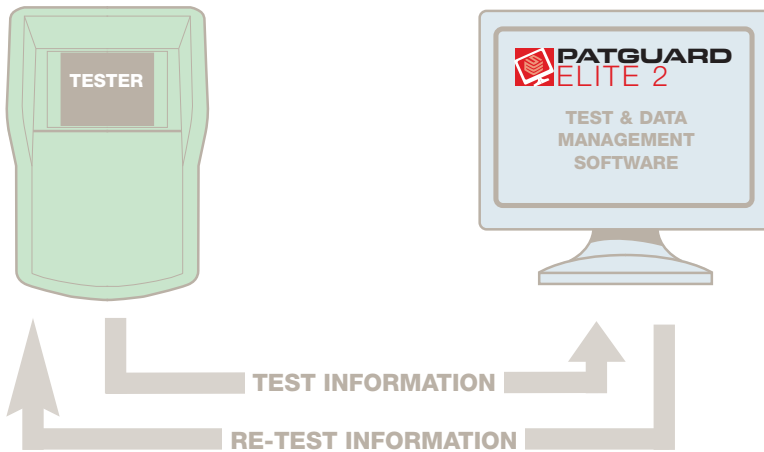


PATGUARD ELITE 2

A top of the line premier software package that is ideal for companies that PAT test on a regular basis or for PAT test service companies. It provides you with quick and easy, complete management of the PAT testing process. One program provides the total solution from the first test, through downloading test results, certificates, planning re-tests and uploading. Its simple to use extensive features include clear re-test identification and optional email alerts for re-testing, which will improve analysis and transparency, helping to increase the speed of your business. It connects directly to your tester and is fast to upload and download. PATGuard Elite 2 uses Windows based management of information so it is easy to learn how to use it.

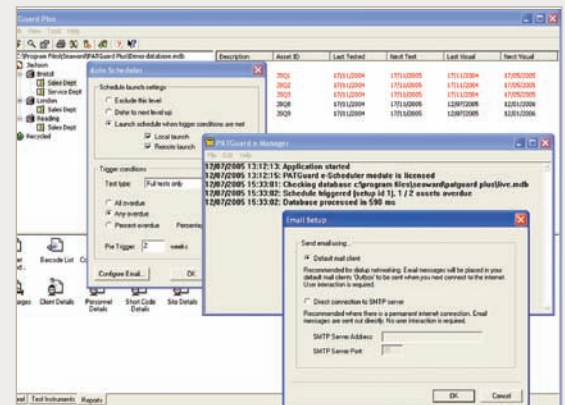


Key Features

- Automatic record generation
- Icon style display
- Drag & Drop for easy re-location
- Most PAT downloads accepted (all Seaward)
- Database compatibility across range
- Compatible with PATGuard Work About 2
- Acrobat reports
- Network enabled
- Automatic re-location of assets
- Full test history
- Asset tracking
- PATGuard viewer program generator
- Full Seaward PAT upload capabilities
- Automatic re-test scheduler
- Customised email safety alerts
- Full range of printed reports
- Download Preview
- Safety First Express import

Ideal for the following users

- PAT Service Providers
- Medium/Large Organisations
- Large assets inventory
- Full record requirement



▲ PATGuard Elite 2 features easy to use Auto Scheduling - you will always know when tests and re-tests are required.

SUPERIOR SOFTWARE

Our PATGuard 2 software is designed to be highly functional, easy to use and above all, helpful. It is available in three versions, each offering the optimum number of functions depending on your requirements. Each software package will add value to the safety testing facilities you offer your customers or use in-house. This can be achieved by utilising full test records, scheduling and pre-emptive, automated notification.

This means you know exactly where all test equipment is located, its test status, and when it requires re-testing. Add to that our PATGuard Work About 2 software which enables mobile working through your PDA and PATGuard Time Manager 2 for managing test times on the job, and you are in total control.

This cuts down on administrative tasks, it can save a lot of valuable time. So whether you are a large international company or small, local firm, PATGuard 2 software makes economical sense.

To find out more please contact us on 0191 586 3511, visit www.seaward.co.uk or email us sales@seaward.co.uk.

Licences:

- Includes Single Licence
- Additional Network Licence (352A918)

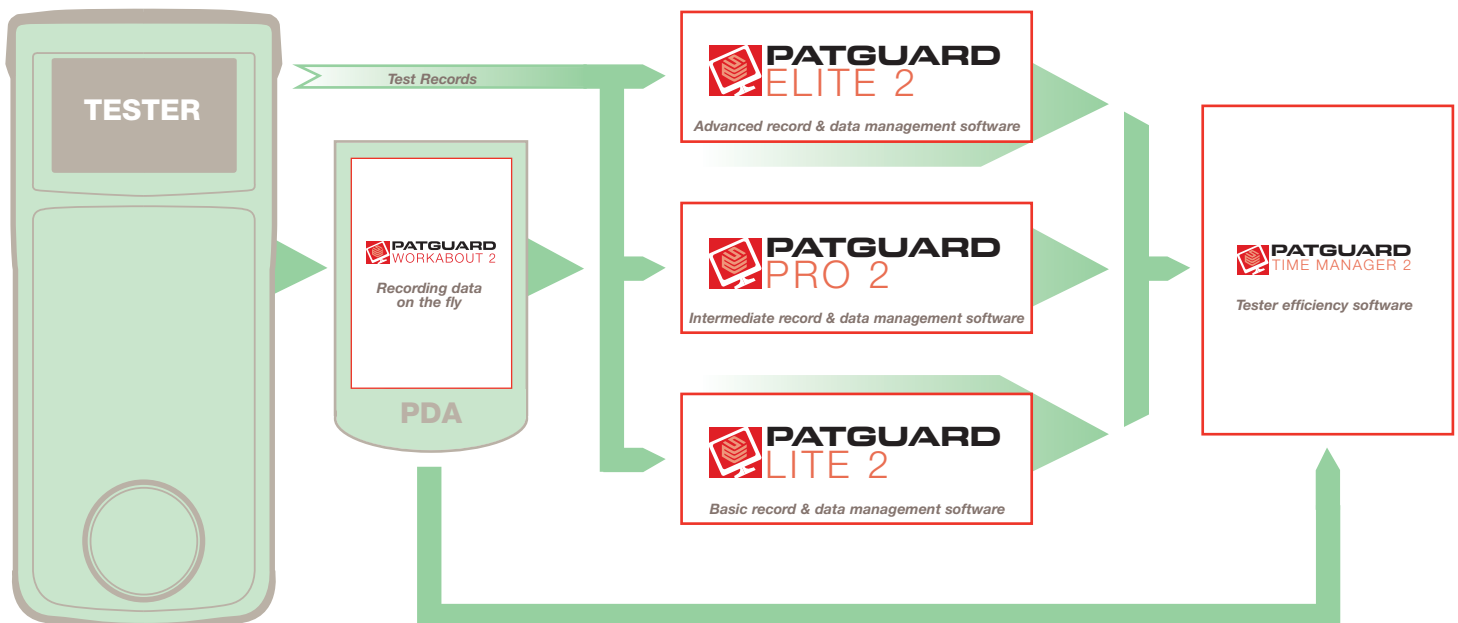
Further PATGuard 2 software from Seaward:

- PATGuard Lite 2 (352A930)
- PATGuard Pro 2 (352A920)
- PATGuard Work About 2 (336A910)
- PATGuard Time Manager 2 (334A910)
- PATGuard Elite SQL (352A950)

PATGuard Elite 2 System Requirements:

- IBM Compatible PC
- Processor Speed 500Mhz or higher
- Microsoft Windows XP/VISTA
- 32 & 64 bit operating systems
- 512Mb RAM
- 150Mb available hard disk space
- Colour monitor with 32 bit colour or greater video card
- CD ROM drive

Part number: 352A910



WORLD LEADERS IN SAFETY TEST AND MEASUREMENT

Seaward test and measurement companies include:

CLARE
INDUSTRIAL SAFETY INSTRUMENTS

RIGEL
MEDICAL

CROPICO
PRECISION INSTRUMENTS

SEAWARD
PORTABLE ELECTRICAL SAFETY INSTRUMENTS